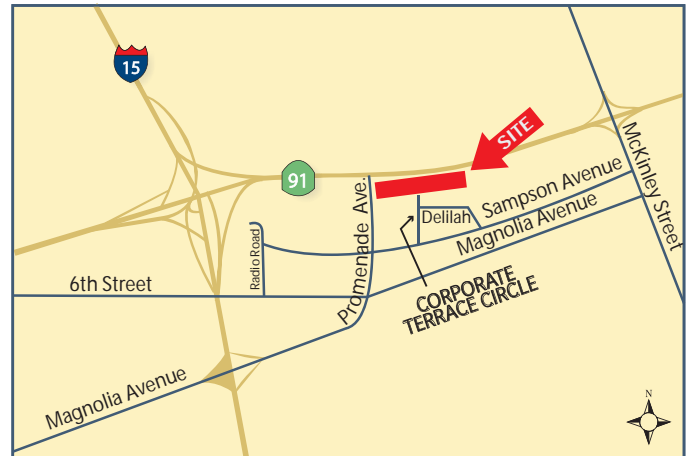


FOR LEASE**3,064 SF | Corona, CA | High-Image Free-Standing Office Building**Presented by Strata Realty, Inc. | www.stratarealty.com | T (951) 280-1733 | F (951) 280-1739**3,064 SF FREE-STANDING OFFICE BUILDING****Location**311 Corporate Terrace Circle
Corona, CA 92879**Features**

- Part of a 10-acre, master-planned development
- Two (2) private offices
- One (1) conference room
- Break room
- Located next to large courtyard with beautiful fountain
- 4:1 parking ratio
- Signage capability on 35' freeway pylon sign
- Approximately 250,000 cars pass by the project daily
- Convenient access to I-15 and 91 freeways
- Close to restaurants, health club, and retail amenities
- Approved for medical use

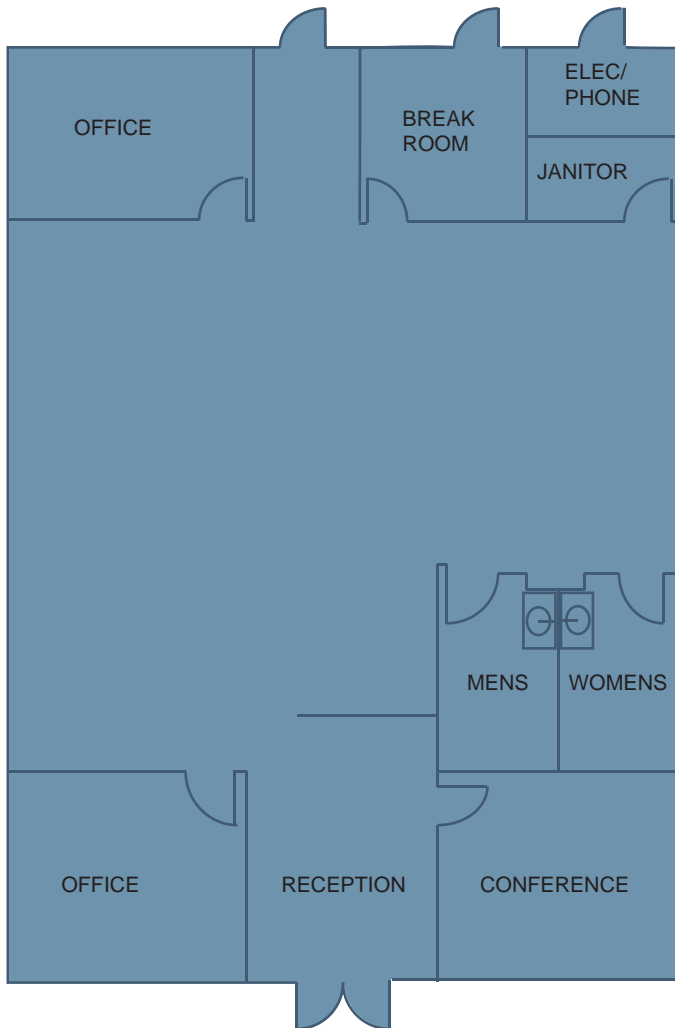
**Contact:****Timothy Hawke, SIOR**(951) 280-1733 | thawke@stratarealty.com**Adam Silverman**(951) 280-1733 | asilverman@stratarealty.com**Landon Hawke**(951) 280-1733 | lhawke@stratarealty.com**DRE Information**Timothy Hawke's license number is 01403432
Adam Silverman's license number is 01397929
Landon Hawke's license number is 01770844

FOR LEASE

3,064 SF | Corona, CA | High-Image Free-Standing Office Building

Contact: Timothy Hawke, Adam Silverman, or Landon Hawke | T (951) 280-1733

FLOOR PLAN



DRE Information

Timothy Hawke's license number is 01403432
Adam Silverman's license number is 01397929
Landon Hawke's license number is 01770844